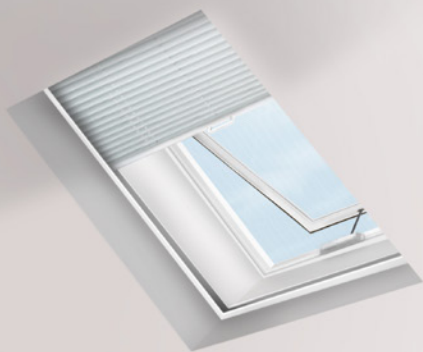




The natural light specialists



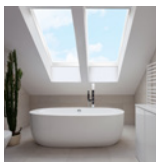
## Residential and Commercial Skylights and Sun Tubes



Canada's Natural Light Leader Since 1955

# Design with Natural Light

Skylights bring all the benefits of natural light directly into your home, dramatically transforming any room, helping you save on energy costs and improving your health and well being. For smaller projects and areas where traditional skylights will not fit, Sun Tubes offer an ideal solution, bringing natural light into virtually any space.



## Transform your home

Create the feeling and sensation of spaciousness without adding to your square footage. Skylights and Sun Tubes transform neglected spaces into living areas, opening your home to more pleasurable living.



## Improve your health & well being

Exposure to daylight has been proven to benefit emotional and physical health. Skylights and Sun Tubes bring the benefits of sunlight into your home, blocking harmful UV rays, optimizing daylight and reducing glare.



## Save on energy costs

Skylights and Sun Tubes help reduce the need for electrical lighting and ventilation systems. That's good news for the environment and your pocket!



## Fresh air circulation

Venting Skylights provide natural ventilation, letting warm air escape and cool air circulate. An excellent energy efficient alternative to fans and air conditioners for removing VOCs (volatile organic compounds), odors and humidity.



## Easy installation & maintenance

Skylights are a quick, easy and affordable way in which to transform your home. Columbia Skylights use state of the art LoE<sup>3</sup> 366<sup>®</sup> glazing technology and a superior condensation drainage system that provides a low maintenance, energy efficient, weather-tight product for years.

# The Columbia Skylight Advantage

In just over 60 years Columbia has grown to become Canada's largest manufacturer of residential and commercial skylights. Since 1955 we have maintained our traditions of precision engineering and exceptional craftsmanship to deliver premium quality skylights that revolutionize your home life environment. Our long outstanding track record has made us the brand of choice for architects, roofers, contractors and DIY homeowners.

## Why Columbia...

- Made in Canada since 1955 
- Most complete skylight product line in Canada
- Energy Star® certified skylight options built with the harshest climates in mind
- Our customers have more choices...
  - The industries largest selection of standard skylight sizes
  - 8 Glass and 6 Acrylic or Polycarbonate glazing options
  - 7 standard frame colors
- Unbeatable custom capability, any model, fixed or venting, any size, any glazing option
- Industry leading warranty featuring 20 years on sealed glass units



Quite simply, you will not find a better selection of quality skylight products or a more complete line of well priced products and accessories to meet your needs.

## Green Friendly



Columbia Skylights support sustainability by reducing our environmental footprint through the recycling of raw materials, eliminating over-packaging, lean manufacturing techniques, and by producing energy efficient products that meet Energy Star® requirements. Columbia Skylights can assist your project obtain LEED™ certification.

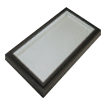
# Choosing your Skylight

## 1 Options for every application

Columbia Skylights are designed to fit homes with 16" and 24" on centre rafters or trusses as well as any other rough opening that you may have.

### Curb Mount

#1 Choice for Contractor/ Pros



VCM

### Self Flashing

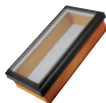
Designed for the Do-It-Yourselfer



VSF

### Deck Mount

Douglas Fir natural wood curb



CFS

### Sun Tubes

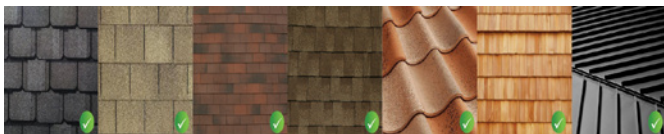
Bring natural light to any space



RST/ FST

## 2 What type of roof do you have?

Skylights can be installed on asphalt or fiberglass shingles, slate, cedar shakes, concrete and Spanish tile, metal roofs and rubberized membrane - EPDM.



### Flat Roof

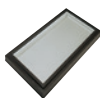
Acrylic Dome  
Acrylic Pyramid  
Sun Tube

### Sloped Roof

Glass  
Acrylic Dome  
Acrylic Pyramid  
Sun Tube

## 3 Fixed or Venting Skylights?

Self Flashing, Curb Mount and Deck Mount Skylights are all available in fixed and venting models. Choose from a crank handle (included as standard) or telescopic pole for manual operation or three electric venting options featuring remote operators and rain sensors. See page 6 for venting skylight options.



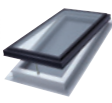
VCM



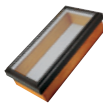
OVCM



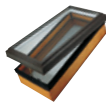
VSF



OVSF



CFS



CVS

**Curb Mount**

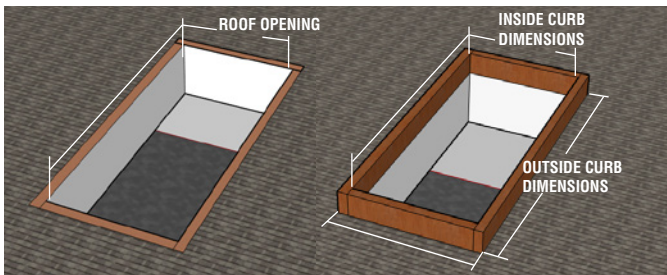
**Self Flashing**

**Wood Deck Mount**

# Choosing your Skylight

## 4 Sizing your Skylight

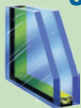
- For Curb Mount Skylights, measure the inside curb and the outside curb dimensions.
- For Self-Flashing and Deck Mount Skylights, measure the roof opening.
- Unusual roof opening? Columbia will custom manufacture to any size, any model, fixed or venting, from 14½" x 14½" to 94½" x 94½".



## 5 Glazing Options

Standard glass is double glazed Tempered/ Tempered. All options are available with clear or white Laminated glass for additional safety and noise control. See page 20 for more information on glazing options.

### Energy Star® Certified Glass



- LoE<sup>3</sup> 366 Clear
- LoE<sup>3</sup> 366 Neat
- LoE<sup>3</sup> 366 Clear Laminated
- LoE<sup>3</sup> 366 Tinted Bronze/Grey
- LoE<sup>3</sup> 366 Reflective Bronze/Grey
- LoE<sup>3</sup> 366 i89
- LoE<sup>3</sup> 366 Triple Glazed
- LoE<sup>3</sup> 366 Triple Glazed Laminated

### Acrylic/ Polycarbonate

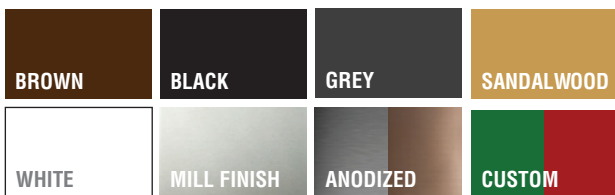


- Clear
- Bronze
- White

Acrylic and Polycarbonate  
glazing available in  
**Double or Triple glazed**

## 6 Choose your frame colour

Exterior aluminum frame with baked enamel Rideau Brown finish comes as standard. Columbia offers a full range of frame colour options on all models, fixed and venting, to match your roofing materials:



\*Custom Colour Match: Bring in your colour chip and we will manufacture a frame to match

# Venting Skylights

## Electric Venting Skylights

### Available on Self Flashing, Curb Mount and Wood Deck Mount Skylights

At the push of a button or flick of a switch you are in charge with fresh air and temperature control. Columbia's electric venting skylight kits are designed by Truth Hardware™. Choose from our Elite, Deluxe and Standard kits. Venting skylights can also be made to fit any size opening up to 4' x 4', in any model.



#### 1 VE Elite - Feature Packed

- Includes a heavy duty skylight motor, LED remote and rain sensor
- Load rated for a total skylight weight of **160lbs**
- LED remote controls an infinite number of skylights
- Thermostat automates skylight based on room temperature setting
- Create up to 9 separate skylight groups for simultaneous control
- Each group can control an infinite number of skylights
- Corrosion resistant rain sensor
- Decorative cover for skylight motor



#### 2 VE Deluxe

- Includes motor, remote & rain sensor
- Load rated for a total skylight weight of **90lbs**
- Slimline remote allows control of up to 4 skylights
- Rain sensor closes the skylight at the first sign of moisture
- Decorative cover for skylight motor



#### 3 VE Standard

- Includes motor & wall switch
- Load rated for a total skylight weight of **90lbs**
- Wall switch controls up to 4 skylights
- Wall switch designed for a single gang electrical box
- Decorative cover for skylight motor
- Up to 35% more economical than options 1 & 2



## Manual Venting Skylights

Columbia offers a standard crank handle for skylights within reach and a telescopic pole option for out of reach applications. Telescopic poles come with an adapter and are available in two sizes: **4ft-6ft** and **6ft-10ft**

4



Telescopic Pole

5



Standard Crank Handle

# Skylight Models

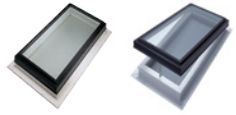
## Product Assortment

### Self Flashing - **VSF/OVSF**

Pages 8, 9

#### The Do-It-Yourself Skylight

Built in flashing and curb  
Fixed and venting models  
Available in glass and acrylic

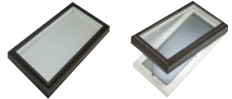


### Curb Mount - **VCM/OVCM**

Pages 10, 11

#### The Contractor/Pro choice

The widest range of standard sizes  
Fixed and venting models  
Available in glass and acrylic

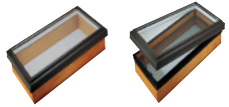


### Wood Deck Mount - **CFS/CVS**

Page 12

#### Natural Wood finish

Built in Douglas Fir wood curb  
Fixed and venting models  
Available in glass



### Roof Access - **RAS**

Page 13

#### Ideal for roof gardens and patios

White aluminum interior frame finish with pull down handle  
Available in glass and acrylic



### Circular Roof Domes - **CRD**

Page 13

#### Residential and commercial circular domes

Two standard sizes 48" and 72"  
Available in acrylic



### Sun Tubes - **RST/FST**

Pages 14 - 16

#### Bring natural light into any space!

Residential and commercial sun tubes  
Rigid and flexible models  
Available for sloped and flat roof applications

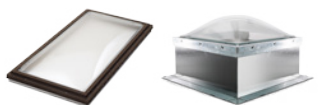


### Commercial Skylights - **AOF/CIC**

Pages 17

#### Most economic solution to lighting your work space

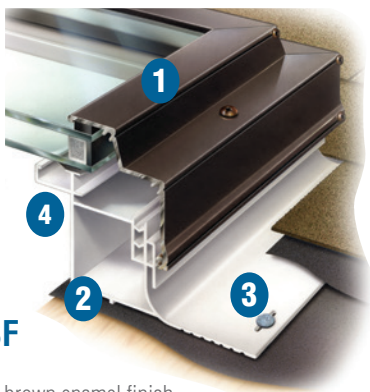
Reinforced structure for oversized applications  
Available for sloped and flat roof applications



# Self Flashing Skylights

Ready to mount with their own built in curb and flashing. Columbia's self flashing skylights are designed for quick and easy installation.

Offering the lowest profile from the Columbia Skylight range, the self flashing model compliments your roof line, offering a sleek, integrated, professional finish.



**VSF**

**1 Durable Aluminum Cap:** Baked brown enamel finish

**2 Base Frame:** Thermally broken white PVC base frame

**3 Curb and Flashing:** Built in maintenance-free white PVC curb and flashing

**4 Condensation channel:** 4 sided rigid channel with weep holes in each corner

**Aluminum Cap Finish:** Baked brown enamel finish standard.

Available in the following colors:



Brown



Black



White



Grey



Sandalwood



Mill Finish



Anodized



Custom Colour

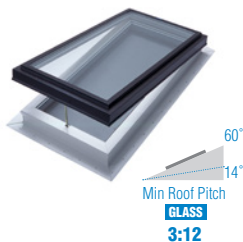




# Self Flashing Skylights

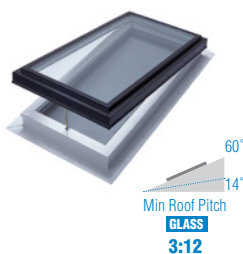
## OVSF-E Electric Venting Self Flashing

- Available in three electric venting options:  
**1** Elite **2** Deluxe **3** Standard (See page 6)
- Available in glass and acrylic (See page 20)
- Available in custom sizes up to 4' x 4'
- Includes removable bug screen
- Energy Star® certified glazing options
- Skylight Blinds available (See page 19)



## OVSF Manual Venting Self Flashing

- Available in two venting manual options:  
**4** Crank handle **5** Telescopic pole (See page 6)
- Available in custom sizes up to 4' x 4'
- Standard equipped with Crank handle
- Optional Telescopic pole including hex ball adapter available in **4ft-6ft** or **6ft-10ft**
- Choice of glass and acrylic (See page 20)
- Includes removable bug screen
- Energy Star® certified glazing options
- Skylight Blinds available (See page 19)



## VSF Fixed Self Flashing

- Available in glass and acrylic (See page 20)
- Energy Star® certified glazing options
- Skylight Blinds available (See page 19)
- Available in custom sizes up to 4' x 4'

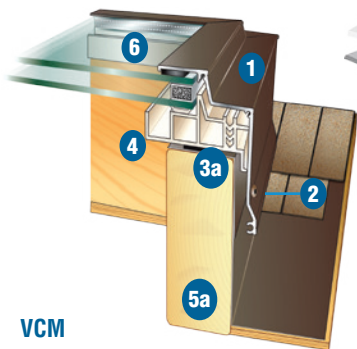


**Minimum 3:12 roof pitch required**



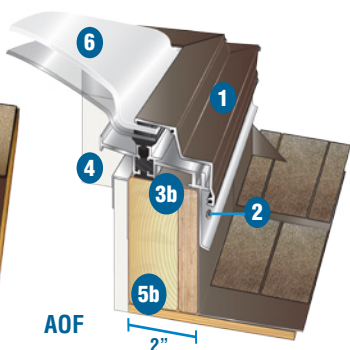
# Curb Mount Skylights

Recommended by roofing professionals as the optimum choice for long lasting, trouble free installation, Columbia's curb mount skylight is the preferred skylight mount for any type of roof.



**VCM**

PVC Base Frame - Outside fastening  
Inside fastening also available



**AOF**

Aluminum Base Frame - Outside fastening

**1 Durable Aluminum Cap:** Baked brown enamel finish\*

**2 Installation:** Outside fastening as standard. Inside fastening also available.

**3 Base Frame:**

**a** Thermally broken white PVC base frame

**b** Thermally broken aluminum base frame

**4 Condensation channel:** 4 sided rigid channel with weep holes in each corner

**5 Curb:**

**a** Can be installed on a 2 x 4 or 2 x 6 curb

**b** Requires a full 2" wide curb

**6 Glazing:** 8 glass & 6 acrylic or polycarbonate glazing options (See page 20)

**Exterior aluminum cap available in choice of colours**



Brown



Black



White



Grey



Sandalwood



Mill Finish



Anodized



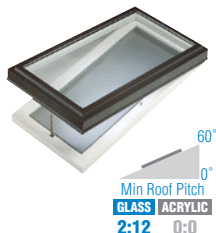
Custom  
Colour



# Curb Mount Skylights

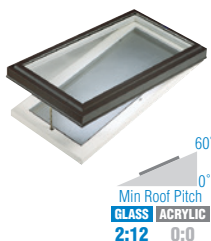
## OVCM-E Electric Venting Curb Mount

- Available in three venting electric options:  
**1** Elite **2** Deluxe **3** Standard (See page 6)
- Available in glass and acrylic (See page 20)
- Available in custom sizes up to 4' x 4'
- Includes removable bug screen
- Energy Star® certified glazing options
- Skylight Blinds available (See page 19)



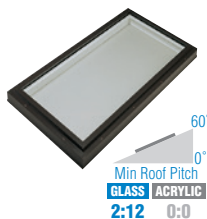
## OVCM Manual Venting Curb Mount

- Available in two venting manual options:  
**4** Crank handle **5** Telescopic pole (See page 6)
- Available in custom sizes up to 4' x 4'
- Crank handle comes as standard
- Optional Telescopic pole including hex ball adapter available in **4ft-6ft** or **6ft-10ft**
- Choice of glass and acrylic (See page 20)
- Includes removable bug screen
- Energy Star® certified glazing options
- Skylight Blinds available (See page 19)



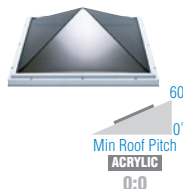
## VCM Fixed Curb Mount

- Columbia's most popular skylight
- Available in glass or acrylic (See page 20)
- 58 standard glass sizes, 83 standard acrylic sizes
- Available in custom sizes up to 8' x 8'
- Energy Star® certified glazing options
- Skylight Blinds available (See page 19)



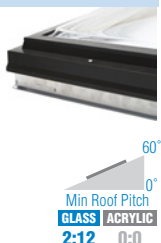
## VCM-P Fixed Curb Mount Pyramid

- Brings distinct architectural flare into your home
- Available in acrylic pyramid - double and triple glazed
- Can be installed on sloped or flat roofs
- Available in inside and outside fastening
- Available in custom sizes up to 8' x 8'
- Can be installed on all types of site built curbs



## AOF Curb Mount Aluminum Frame

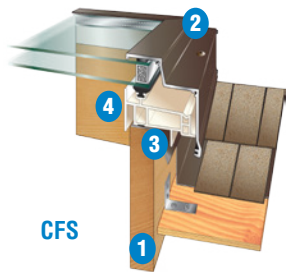
- Ideal for larger skylights and commercial applications
- Aluminum thermally broken heavy duty base frame
- Available in custom sizes up to 8' x 8'
- Sloped condensation gutter for positive drainage
- Requires a full 2" wide curb
- Fastens from the outside
- Available in glass, acrylic or polycarbonate.



# Wood Deck Mount Skylights

A premium deck mounted skylight which includes a Douglas Fir curb, PVC base frame and extruded aluminum cap. The Canadian Douglas Fir curb is:

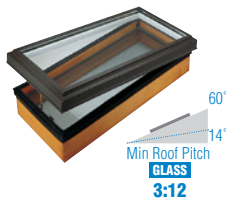
- **Not primed** • **No Finger joints** • **Premium Quality** • **Natural wood**



- 1 Curb:** Premium 1" x 5.5" natural Douglas Fir recesses into skylight opening
- 2 Durable Aluminum Cap:** Baked brown enamel finish
- 3 Base Frame:** Thermally broken white PVC base frame
- 4 Condensation Channel:** 4 sided rigid channel with weep holes in each corner

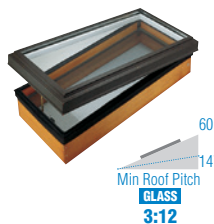
## CVS-E Electric Venting Wood Deck Mount

- Available in three venting electric options:  
**1 Elite** **2 Deluxe** **3 Standard** (See page 6)
- Available in glass (See page 20)
- Available in custom sizes up to 4' x 4'
- Includes removable bug screen
- Energy Star® certified glazing options
- Skylight Blinds available (See page 19)



## CVS Manual Venting Wood Deck Mount

- Available in two venting manual options:  
**4 Crank handle** **5 Telescopic pole** (See page 6)
- Crank handle comes as standard
- Optional Telescopic pole including hex ball adapter available in **4ft-6ft** or **6ft-10ft**
- Available in glass (See page 20)
- Available in custom sizes up to 4' x 4'
- Includes removable bug screen
- Energy Star® certified glazing options
- Skylight Blinds available (See page 19)



## CFS Fixed Wood Deck Mount

- Available in glass (See page 20)
- Available in custom sizes up to 4' x 4'
- Energy Star® certified glazing options
- Skylight Blinds available (See page 19)



**Exterior aluminum cap available in choice of colours**



Sizes	A06	C01	C04	C06	C08	M02	M04	M06	M08	S06
<b>Rough Opening</b>	14.5 x 45.25	21.75 x 28	21.75 x 37	21.75 x 45.25	21.75 x 55	29.75 x 29.75	29.75 x 37	29.75 x 45.25	29.75 x 55	45.25 x 46.5

# Roof Access Skylights



The ideal solution to gain outdoor access to a rooftop for outdoor living spaces or services. The roof access skylight can be installed on a flat or sloped roof curb application.

## RAS Roof Access Skylight

- Available in glass or acrylic dome
- Acrylic dome suitable for flat roof applications
- Glass pitch minimum 2:12
- One piece thermally broken white aluminum frame with pull down handle
- Heavy duty opening gas hydraulic cylinders
- Choose from 7 frame aluminum cap colors
- Premium locking device included



- Brown
- Black
- White
- Anodized
- Grey
- Sandalwood
- Mill Finish
- Custom Colour

## Circular Roof Domes

Delivers a dramatic departure from the ordinary, opening your home or lobby/reception area to a beautiful overhead pool of sunlight.

## CRD Circular Roof Dome

- Available in two standard sizes: **48"** and **72"**
- Suitable for flat or sloped roof
- Available in acrylic or polycarbonate domes
- Built in 6" non-condensating fiberglass brown curb
- Standard exterior brown fiberglass finish



INSIDE CURB (inches)	
<b>C48R</b>	<b>C72R</b>
42"	66.5"

# Residential Sun Tubes

RST

## Rigid Sun Tube

Columbia's residential Sun Tubes bring the natural light to virtually any space in your home. Installed on any roof in under two hours, the low profile acrylic dome captures sunlight on your roof from dawn till dusk.

- Kit: Dome, roof jack, 4ft. of light tube and a prismatic or soft white diffuser
- Flat and sloped kits available in 4 sizes: **10" 13" 18" 21"**
- Quick, simple installation for any shingle or shake roof
- A source of natural light where regular skylights cannot be installed
- See page 16 for residential sun tube accessories

Models

## Choose from four models



**Flat**

10" 13" 18" 21"



**Sloped**

10" 13" 18" 21"



**Curb Mounted**

10" 13" 21"



**Low Profile Glass**

13"

### 1 Dome

- Formed from high impact modified acrylic
- Absorbs 99% of UV rays while maintaining optic clarity
- Aluminum trim ring and stress collar

### 2 Roof Jack (Flashing)

- Black baked enamel heavy duty aluminum frame
- Compliments existing roofing materials
- Angled roof jack with unique forward sloping design eliminating the use of elbows.
- Flat roof jack available for flat roof installation

### 3 Rigid Light Tube

- Micro Silver aluminum light pipe: 98% reflectivity
- Pipe is easily trimmed with shears during installation

### 4 Flat Diffuser

- Diffuser sits flush with your ceiling for a clean, integrated, sleek finish
- Standard kit comes with prismatic diffuser. Soft white diffuser available for less intense light. Includes double lens for optimum energy efficiency.



Model Size	Coverage Area	Wattage Output Equivalent	Max Tube Length
10"	Up to 150 sq. ft.	Up to 300 Watts	12ft
13"	Up to 300 sq. ft.	Up to 500 Watts	14ft
18"	Up to 500 sq. ft.	Up to 1000 Watts	16ft
21"	Up to 700 sq. ft.	Up to 1450 Watts	20ft

# Residential Sun Tubes

## FST Flexible Sun Tube

Columbia's flexible sun tube skylight is the easiest tubular system to install. The highly reflective aluminum light pipe directs sunlight around obstacles and is ideal for shorter runs.

- Kit: Dome, roof jack, 8ft. of flexible light tube and a prismatic or soft white diffuser
- Available in the most popular sun tube size: **13"**
- Quick, simple installation for any shingle or shake roof
- Designed for ease and speed of installation
- Easily installs around attic obstructions

## Models Choose from four models



**Flat**  
13"



**Sloped**  
13"



**Curb Mounted**  
13"



**Low Profile Glass**  
13"

## 5 Flexible Sun Tube

- 8ft of flexible light pipe included, 12ft kit also available
- Highly reflective aluminum duct
- Tear, puncture and fire resistant
- Easiest tubular product to install, ideal for shorter runs

**Installs in  
Under 2  
Hours!**



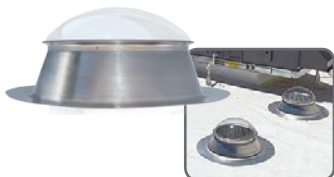
# Commercial Sun Tubes

## RST-C Rigid Commercial Sun Tube

Ideal for commercial or retail buildings, Columbia's Commercial Sun Tube brings the benefits of natural light to virtually any space.

### Flashing Options

#### 1 Flat Roof Flashing

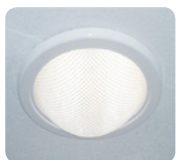


#### 2 Curb Mount



### Finishing Options

#### A Sheet Rock



#### B Transition Box (Drop ceiling offices)



#### C Warehouse

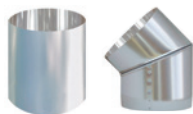


Model Size	Coverage Area	Output Equivalent	Max Tube Length
21"	Up to 700 sq. ft.	Up to 1450 Watts	20ft

## RST Sun Tube Accessories

### Light Tube Extension (24") & Elbow

- Available on all Sun Tubes – 10", 13", 18", and 21"
- Constructed from the same reflective material
- Tek screws and foil tape included
- Elbow is fully adjustable from 0 - 45 degrees



### Electric Light Kit

- Available on all Sun Tubes – 10", 13", 18", and 21"
- Can be installed in place of previous light fixture
- Holds standard, CFL or LED light bulbs
- Installs into the light pipe & wired to wall switch for operation.



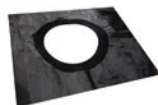
### Remote Dimmer Kit

- Available on Sun Tubes – 10", 13" and 21"
- Kit: Remote, dimmer panel, light pipe and 120 volt rpm motor
- Installed in the lower portion of the light tube
- Includes receiver that must hang vertically on nearby stud
- Dimmer may also be hard wired for wall switch



### Tile skirt

- Available on 10", 13" and 18" Sun Tube models
- For sloped tiled roof applications
- Installs over the sun tube flashing for optimal seal



### Turret Extension

- Available on 10" and 13" Sun Tube models
- Used when installing on high profile S tiles
- Slip the turret over flashing lip to accommodate the S tiles





# Commercial Skylights



AOF

## Aluminum Outside Fastening Skylights

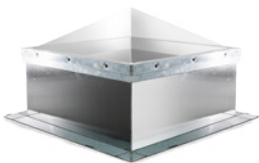
- 1 Ideal for larger skylights and commercial applications with site built curbs. Choose from double clear/bronze/white, triple clear/bronze/white or polycarbonate. Customize to any size between 14½ x 14½ to 98¼ x 98¼ in **domes** or **pyramids**.
- 2 Standard exterior aluminum frame with brown baked enamel finish. Also available in black, grey, white, sandalwood, mill-finish, clear anodized or custom colour aluminum frame.
- 3 Thermally broken aluminum base frame featuring **unique sloped condensation channel with positive drainage**.
- 4 Mounts to site built curb through pre-drilled holes on the outside of the aluminum base frame. Suitable for flat or sloped roof applications.



CIC

## Commercial Integrated Curb Skylights

This fully assembled integrated curb skylight is built to help reduce your installation time and expense. It's available with a thermally broken vinyl base frame (model TLB) or with a vinyl frost barrier (model FBDD).



TLB IC DOME



TLB IC PYRAMID

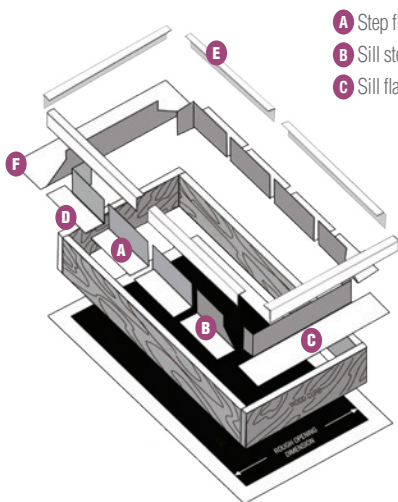
- Includes a 12" tall insulated curb with 3" mounting flange. Also available in 14"/16"/18"/24" or custom height models.
- Curb includes rigid insulation for superior thermal performance.
- 71 Standard sizes.
- Customize to any size between 14¼ x 14¼ to 96½ x 96½.
- Pyramids available for square shaped skylights.
- Choose from double clear/bronze/white, triple clear/bronze/white or polycarbonate.



# Flashing Kits and Underlayment

## FKCM Curb Mount Flashing Kit

- For sloped asphalt, shingle or wood shake roofs only.
- Not suitable for flat roofs. Must use cant strip and customized flashing.
- Compatible with Columbia's Fixed and Venting Curb Mount Skylights.
- Suitable for 2' x 4' or 2' x 6' curb.
- Features pre-cut aluminum steps and pre-formed head and sill flashings.
- Includes counter flashing.
- Custom sizes available.
- Baked enamel brown finish as standard.
- Black, Charcoal Grey, White and Mill finish flashing kits also available.



- A Step flashing
- B Sill step flashing
- C Sill flashing
- D Head step flashing
- E Counter flashing
- F Head flashing



## FKRW Wood Deck Mount Flashing Kit

- Wood Deck Mount skylights (CFS & CVS) require Columbia flashing kit
- **Warranty on Deck Mount void unless installed with FKRW kit**
- Kit includes roofing underlayment for use between roof and curb
- Baked enamel brown finish as standard
- Black, Charcoal Grey and White flashing kits also available



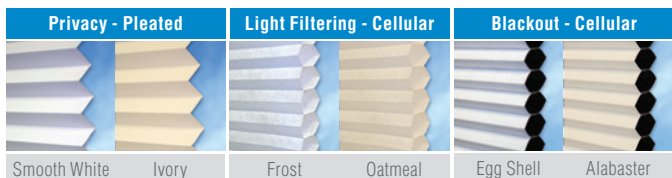
## SRU Skylight Roofing Underlayment

- Self-adhesive membrane
- Eliminates air currents and water infiltration
- 25mil thick synthetic roof underlayment made of polyolefin
- Measures 12" x 21'
- UV protected, anti-skid surface allows for fast and safe installation
- May be installed without primer
- Self adhesive activated by release sheet



# Columbia Skylight Blinds

Control the amount of light and heat entering your skylight with a Columbia Skylight Blind. Offering great value and style at an attractive price, transform any room with one quick and easy installation. All fabrics are constructed of polyester which help prevent staining and water absorption. Columbia Skylight Blinds are available in three fabric options:



## Why Skylight Blinds?

- Control the amount of light & heat entering a room
- Save on energy costs - both heating and cooling
- Skylight Blinds provide privacy and style
- Reduce fading on carpets, fabrics and furniture
- Cut out over 90% of harmful UV rays
- Easy to install: fasten brackets & snap the blind into the lightwell
- Easy to use: smooth operation with telescopic pole or manual handle

## Fabric and Function

Model	Design	% Light Stopped	% Heat Gain Stopped	% UV Rays Stopped
<b>Privacy</b>	Pleated	20%	40%	90%
<b>Light Filtering</b>	Cellular	35%	55%	90%
<b>Blackout</b>	Cellular	99%	79%	90%

## Sizes Standard and Custom Sizes

14 Standard sizes up to 4' x 4'. Custom capability also available.

Model	2020	2028	2036	2052	2828	2836	2840
<b>Finished Lightwell</b> opening dimensions w x h (inches)	13.5 x 13.5	13.5 x 21.5	13.5 x 29.5	13.5 x 45.5	21.5 x 21.5	21.5 x 29.5	21.5 x 33.5
	<b>2852</b>	<b>3636</b>	<b>3652</b>	<b>4040</b>	<b>4052</b>	<b>4242</b>	<b>5252</b>
	21.5 x 45.5	29.5 x 29.5	29.5 x 45.5	33.5 x 33.5	33.5 x 45.5	35.5 x 35.5	45.5 x 45.5

- Blinds are fitted in the light shaft below the skylight
- Bottom rail includes a spring and turnbuckle to make tension adjustments

**Blinds must be installed at least 12" from skylight to maintain warranty. If installed too close, heat build up could damage skylight frame and or seal.**

# Glazing Options



## GLASS

Columbia uses state of the art **CARDINAL IG LoE<sup>3</sup> 366<sup>®</sup>** technology to deliver the industry's widest range of Energy Star<sup>®</sup> certified glazing options.

**Tempered/Tempered** - Five times stronger than ordinary glass

- All glass units include both panes tempered

**Tempered/Laminate** - A plastic interlayer is added for additional safety

- Recommended for all overhead applications
- Glass fragments adhere to plastic interlayer when broken
- Choose from clear or white translucent laminate glass
- Reduces outside noise
- Blocks 99% of UV rays
- **Available as an add on for all glazing options**



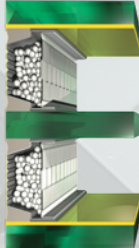
Glazing option	UV Rays Blocked	Light Transmitted	Solar Heat Gain	Glazing Standard
LoE <sup>3</sup> Clear	95%	64%	0.28	GOOD
LoE <sup>3</sup> Neat	95%	64%	0.28	
LoE <sup>3</sup> Tinted Bronze/Grey	95%	45%	0.27	BETTER
LoE <sup>3</sup> Solar Reflective Bronze/Grey	95%	17%	0.15	
LoE <sup>3</sup> i89 Energy Plus	99.5%	58%	0.25	BEST
LoE <sup>3</sup> Triple Glazed	99.5%	46%	0.24	
LoE <sup>3</sup> Triple Glaze Laminated	99.5%	57%	0.25	



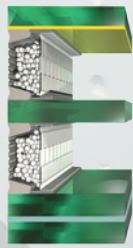
Double Glazed  
Tempered/Tempered



Double Glazed  
Tempered/Laminated



Triple Glazed  
Temp/Temp/Temp



Triple Glazed  
Temp/Temp/Laminated

## ACRYLIC

**Clear** Allows the maximum amount of visible light.

**Bronze** Allows a clear view through the skylight while reducing the amount of visible light and solar heat gain. Results in softer room lighting.

**White** Offers privacy along with reduced visible light and solar heat gain.

## POLYCARBONATE

A tough plastic that exhibits outstanding strength, often used in commercial applications where lower flame spread ratings are required.



## Canada's widest selection of Energy Star<sup>®</sup> certified glazing options

### LoE<sup>3</sup> 366 Clear

#### Industry Bench Mark

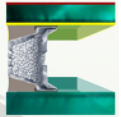
- Dual pane with argon gas.
- LoE<sup>3</sup> 366 coating is virtually invisible.
- Blocks 95% of the sun's damaging ultraviolet rays.
- Twice the condensation resistance of ordinary glass.



### LoE<sup>3</sup> 366 Neat


#### Low Maintenance

- All the benefits of LoE<sup>3</sup> 366 Clear plus self cleaning properties.
- Titanium dioxide layer breaks up organic material on the glass.
- Exceptionally smooth surface allows rain water to 'sheet off'.
- Rain water evaporates quickly preventing water spotting.



### LoE<sup>3</sup> 366 Tinted Bronze/Grey

#### For a softer light

- All the benefits of LoE<sup>3</sup> 366 Clear plus glare reduction.
- Reduces solar heat gain and light transmittance.
- Ideal for rooms that require a softer light.
- Suitable for rooms that are south or west facing.
- **Neat** glass available as add on. 



### LoE<sup>3</sup> 366 Solar Reflective Bronze/Grey


#### Mirror Finish

- Mirror finish reflects the sun.
- The lowest visible light transmittance and daytime privacy.
- Superior solar heat gain and light control characteristics.



### LoE<sup>3</sup> 366 i89


#### Close to Triple Pane Performance

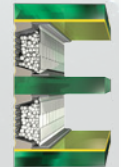
- All the benefits of LoE<sup>3</sup> 366 Clear plus additional i89 coating.
- Gives you close to triple pane performance.
- Optimal thermal performance at an affordable price.
- **Neat** glass available as add on. 



### LoE<sup>3</sup> 366 Triple Glazed


#### The Ultimate Performance Glass

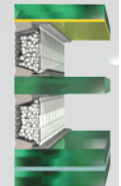
- Three layers and two LoE<sup>3</sup> 366 coatings.
- Effective in reducing noise transmission.
- Suitable for all climate zones.
- **Neat** glass available as add on. 



### LoE<sup>3</sup> 366 Triple Glazed Laminated

#### The Ultimate Performance Glass Plus Protection

- Two layers of tempered glass and one layer of laminated glass.
- Two argon gas filled chambers.
- 10 year hail warranty.
- **Neat** glass available as add on. 



# Energy Star® Skylights

Columbia manufactures the widest range of Energy Star® certified skylights in Canada. By choosing Energy Star® certified Skylights you save on energy costs and protect the environment. Find out what zone you live in and choose an Energy Star® glazing option that meets the requirements.

The Canadian Energy Star Program Version 5.0 for skylights takes effect January 1<sup>st</sup>, 2020. All skylights that exceed a U-factor of .40 Btu/h·ft<sup>2</sup>°F or 2.29 W/m<sup>2</sup>·K will not qualify for Energy Star® certification. Thus, only triple glazed skylights will meet this standard. Columbia is proud to have offered the triple glazed option on all skylight models, fixed and venting in our line up since 2009.

## Canada's Energy Star® Zones



Energy Star zones effective February 2015

## What makes a Skylight Energy Efficient?

- 1 U Factor:** Indicates the rate of heat loss. The lower the U Factor the greater a skylights resistance to heat flow.
- 2 SHGC** (Solar Heat Gain Coefficient): The fraction of incident solar radiation admitted through a skylight, Expressed as a number between 0 and 1, the lower a skylight's solar heat gain coefficient, the less solar heat it transmits.
- 3 VT** (Visible Transmittance): The amount of visible light transmitted. A high VT is desirable to maximize daylight.

## The Columbia Advantage

- 8 Energy Star® certified glass glazing options
- LoE<sup>3</sup> Triple glazed and LoE<sup>3</sup> i89 are the skylight industry's most energy efficient glazing options, helping you maximize savings and reduce your green footprint.
- Available on all models, fixed and venting, standard and custom sizes.
- For technical information on the energy efficiency of any of Columbia skylight or sun tube model visit:  
[www.columbiaskylights.com](http://www.columbiaskylights.com) or [www.oee.nrcan.gc.ca](http://www.oee.nrcan.gc.ca)

**FACT**  
For the new 2020 Energy Star® Program, only triple glazed skylights will meet the requirements.

# Standard Sizes

● Available in Glass   ● Available in Acrylic Dome and Polycarbonate

Model	Inside Curb Dimensions inches	Outside Curb Dimensions inches	SKYLIGHT MODEL						
			OVSF	VSF	OVCM	VCM	VCMP	RAS	AOF
2020	14.5 x 14.5	17.5 x 17.5	● ●	● ●	● ●	● ●	●		● ●
2028	14.5 x 22.5	17.5 x 25.5	● ●	● ●	● ●	● ●			● ●
2036	14.5 x 30.5	17.5 x 33.5	● ●	● ●	● ●	● ●			● ●
2052	14.5 x 46.5	17.5 x 49.5	● ●	● ●	● ●	● ●			● ●
2076	14.5 x 70.5	17.5 x 73.5		● ●		● ●			● ●
2828	22.5 x 22.5	25.5 x 25.5	● ●	● ●	● ●	● ●	●		● ●
2836	22.5 x 30.5	25.5 x 33.5	● ●	● ●	● ●	● ●		● ●	● ●
2840	22.5 x 34.5	25.5 x 37.5	● ●	● ●	● ●	● ●		● ●	● ●
2852	22.5 x 46.5	25.5 x 49.5	● ●	● ●	● ●	● ●		● ●	● ●
2860	22.5 x 54.5	25.5 x 57.5		● ●		● ●			● ●
2864	22.5 x 58.5	25.5 x 61.5		● ●		● ●			● ●
2868	22.5 x 62.5	25.5 x 65.5		● ●		● ●		● ●	● ●
2876	22.5 x 70.5	25.5 x 73.5		● ●		● ●		● ●	● ●
28100	22.5 x 94.5	25.5 x 97.5		● ●		● ●			● ●
3280	26.5 x 74.5	29.5 x 77.5		●		● ●			● ●
3636	30.5 x 30.5	33.5 x 33.5	● ●	● ●	● ●	● ●	●	● ●	● ●
3652	30.5 x 46.5	33.5 x 49.5	● ●	● ●	● ●	● ●		● ●	● ●
3668	30.5 x 62.5	33.5 x 65.5		● ●		● ●		●	● ●
3676	30.5 x 70.5	33.5 x 73.5		● ●		● ●		●	● ●
3880	32.5 x 74.5	35.5 x 77.5		●		● ●		●	● ●
4040	34.5 x 34.5	37.5 x 37.5	● ●	● ●	● ●	● ●	●	● ●	● ●
4052	34.5 x 46.5	37.5 x 49.5	● ●	● ●	● ●	● ●		● ●	● ●
4064	34.5 x 58.5	37.5 x 61.5		●		● ●			● ●
4076	34.5 x 70.5	37.5 x 73.5		●		● ●			● ●
4242	36.5 x 36.5	39.5 x 39.5	● ●	● ●	● ●	● ●	●	● ●	● ●
4280	36.5 x 74.5	39.5 x 77.5		●		● ●		●	● ●
5252	46.5 x 46.5	49.5 x 49.5	● ●	● ●	● ●	● ●	●	●	● ●
5264	46.5 x 58.5	49.5 x 61.5		●		● ●			● ●
5276	46.5 x 70.5	49.5 x 73.5		●		● ●			● ●
6060	54.5 x 54.5	57.5 x 57.5		●		●	●		●
36100	30.5 x 94.5	33.5 x 97.5				● ●			● ●
40100	34.5 x 94.5	37.5 x 97.5				●			●
52100	46.5 x 94.5	50.25 x 98.25							●
52120	46.5 x 114.5	50.25 x 118.25							●
60100	54.5 x 94.5	58.25 x 98.25							●
60120	54.5 x 114.5	58.25 x 118.25							●
6464	58.5 x 58.5	61.5 x 61.5					●		●
6476	58.5 x 70.5	62.25 x 74.25							●
64100	58.5 x 94.5	62.25 x 98.25							●
64120	58.5 x 114.5	62.25 x 118.25							●
7676	70.5 x 70.5	74.25 x 74.25					●		●
76100	70.5 x 94.5	74.25 x 98.25							●
76120	70.5 x 114.5	74.25 x 118.25							●
8484	78.5 x 78.5	82.25 x 82.25					●		●
84100	78.5 x 94.5	82.25 x 98.25							●
100100	94.5 x 94.5	98.25 x 98.25					●		●



## **COLUMBIA MANUFACTURING CO. LTD.**

### **Head Office**

4575 Tillicum Street  
Burnaby, BC V5J 3J9  
Tel: 604.437.3377  
Toll Free: 1.888.437.5557  
Fax: 604.437.4445  
Toll Free Fax: 1.866.437.7167  
Email: [orderdesk@columbiaskylights.com](mailto:orderdesk@columbiaskylights.com)  
[info@columbiaskylights.com](mailto:info@columbiaskylights.com)



## **COLUMBIA MANUFACTURING CO. LTD.**

### **Eastern Distribution**

5650A Timberlea Boulevard  
Mississauga, Ontario L4W 4M6  
Toll Free: 1.888.437.5557  
Toll Free Fax: 1.866.437.7167  
Email: [orderdesk@columbiaskylights.com](mailto:orderdesk@columbiaskylights.com)  
[info@columbiaskylights.com](mailto:info@columbiaskylights.com)



Dedicated to your total satisfaction, Columbia's Skylights and Sun Tubes are crafted from the finest materials available, engineered with unparalleled quality. Guaranteed to be weather tight, providing a lifetime of enjoyment and trouble free maintenance. All sealed glass units are guaranteed for a period of twenty years from the date of purchase.

For more information on Columbia's industry leading warranty visit our website.